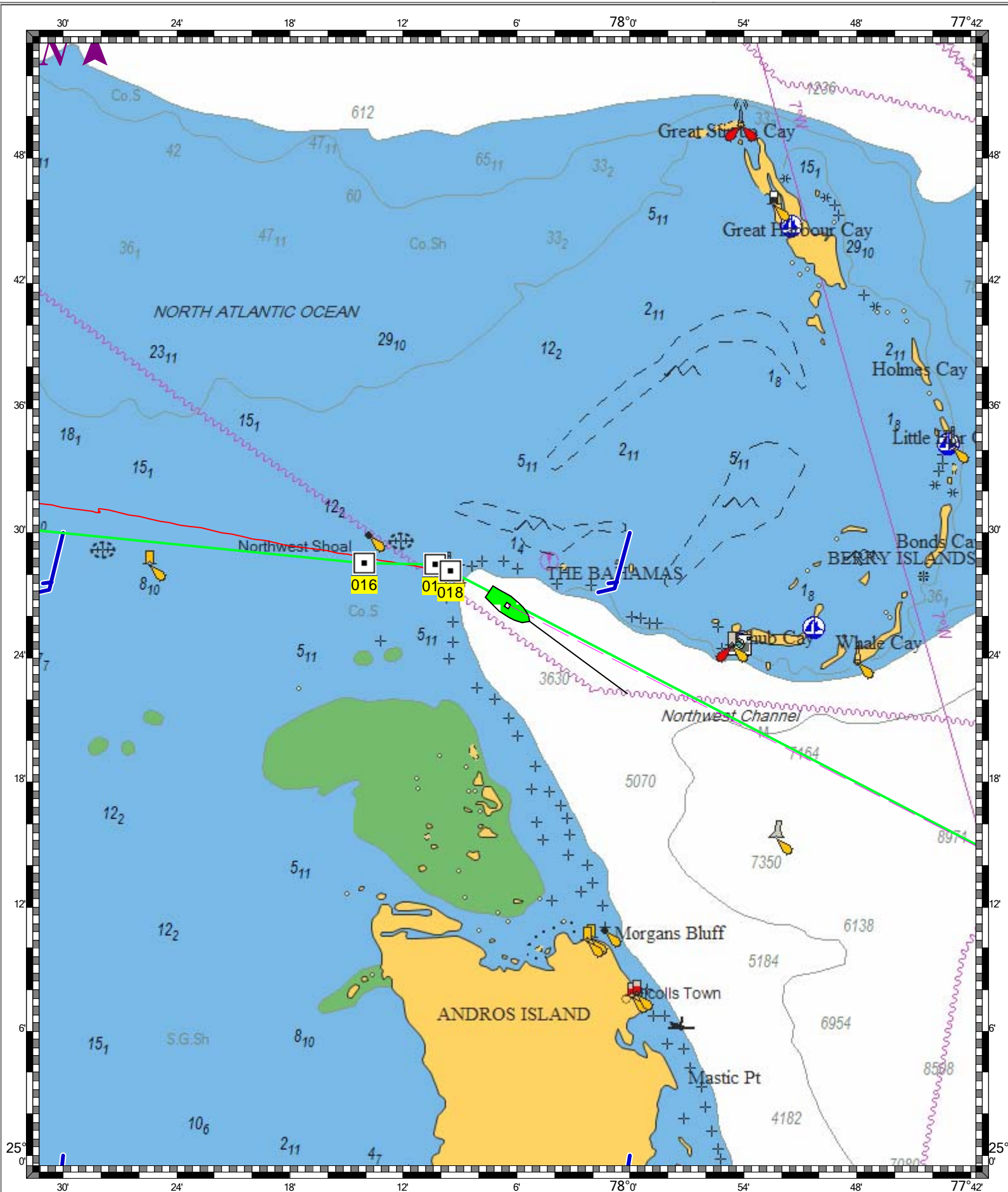
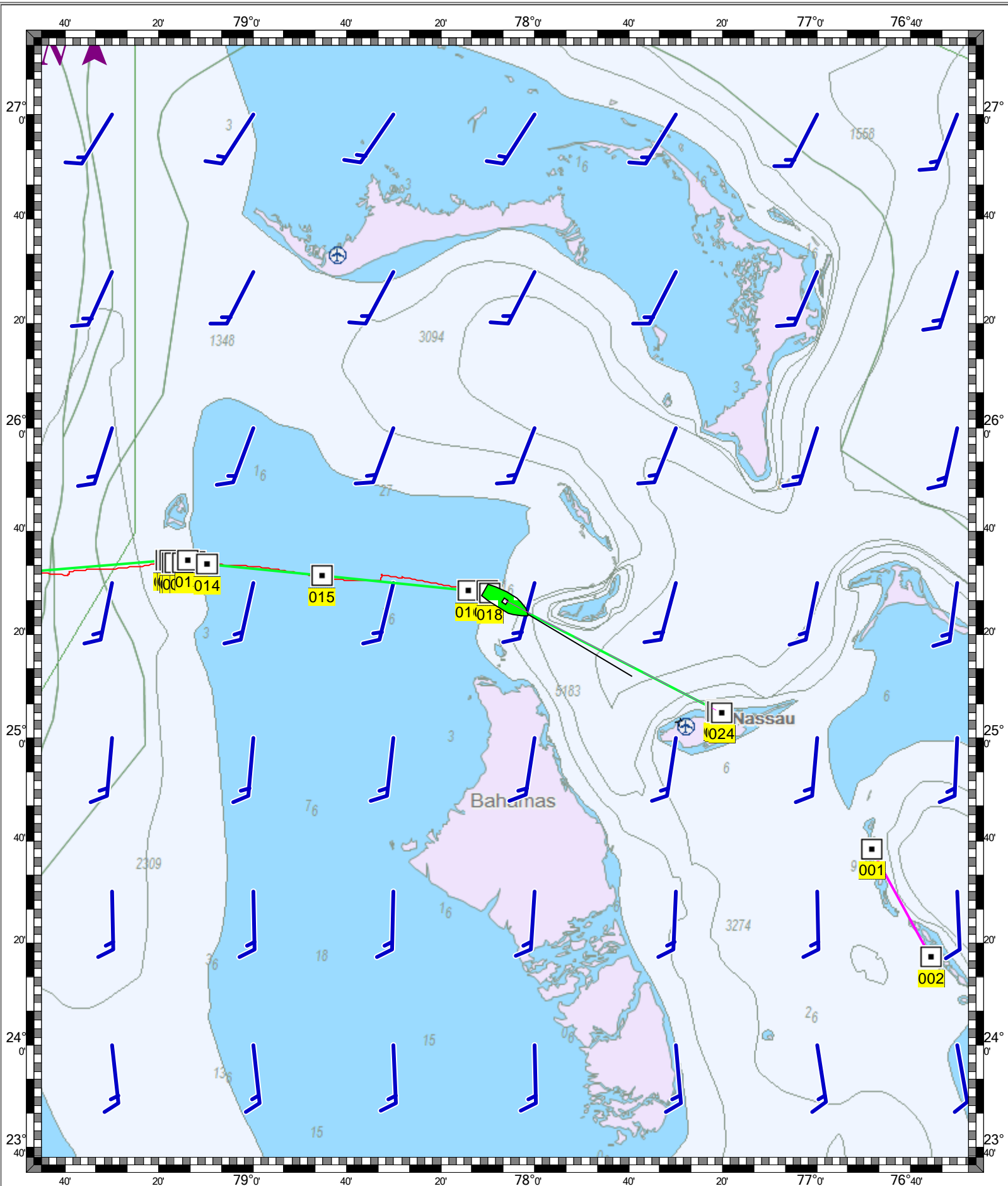


STRAITS OF FLORIDA AND APPROACHES - 1 : 425,000
(MAX Pro World Charts - vector format) Chart #11013 - Depth Units: Feet



DO NOT USE FOR NAVIGATION
SOME NAVIGATION AIDS MAY NOT BE SHOWN

MAX Pro World Chart - 1 : 1,700,000
(MAX Pro World Charts - vector format) Chart #MAX Pro - Depth Units: Feet



DO NOT USE FOR NAVIGATION
SOME NAVIGATION AIDS MAY NOT BE SHOWN